

# A Traditional Floating Floor System

## Pre-Installation Inspection

- A. Floor installer shall verify slab tolerance of concrete and report any corrections to General Contractor and Architects in writing. Room shall be broom cleaned and free of any foreign material.
- B. Floor installer shall document site and working conditions prior to and during installation. This documentation shall become a part of any warranty and may or may not affect fulfillment of any warranty.

## Installation

- A. Cover entire slab with 6-mil polyethylene, lapping joints a minimum of 6".
- B. Subfloor
  - 1. Resilient pads shall be attached to first plywood layer 12" O.C. (32 per sheet) and 6" from plywood edges on all sides. Install first layer of plywood with pads facing down perpendicular to the orientation of the long dimension of the maple flooring and breaking rows by 4'. Allow 1/4" spacing between sheets and 1-1/2" to 2" from walls and vertical obstructions.
- C. The second layer of subfloor material shall be laid diagonally at 45° angles over the first layer with 1/4" spacing on all edges, breaking rows at 4'. Second layer shall be attached using 1" coated staples, or equivalent, at a minimum of 12" O.C.

### Option:

Both layers of plywood may be laid at 45° angles (criss cross fashion) to finish flooring.

## D. Maple Flooring

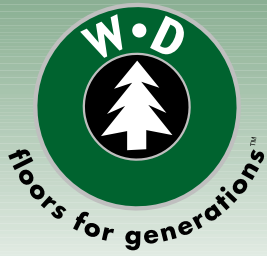
- 1. Install W•D maple flooring parallel with the long dimension of room. Flooring shall be power nailed or stapled every 10" to 12" with all end joints properly driven tight.
- 2. Expansion joints may be required between flooring strips intermittently throughout the floor. Requirements will be determined by site and geographical conditions.
- 3. Provide a 1-1/2" to 2" expansion void at all walls and permanent obstructions.

## Floor sanding

- A. Machine sand entire floor with coarse, medium and fine paper to a smooth and uniform surface, free from edger marks and drum drops.
- B. Remove all sanding dust and lint from entire surface by vacuum and/or tack.

## Finishing and Gamelines

- A. Inspect entire floor to be sure surface is able to accept seal/finish. Floor should be free from dust and debris.
- B. Apply two coats of W•D seal and two coats of W•D finish per manufacturer's label instructions.
- C. Floor shall be buffed, cleaned and tacked between coats.
- D. Gamelines – apply game lines and logos as indicated by drawings.



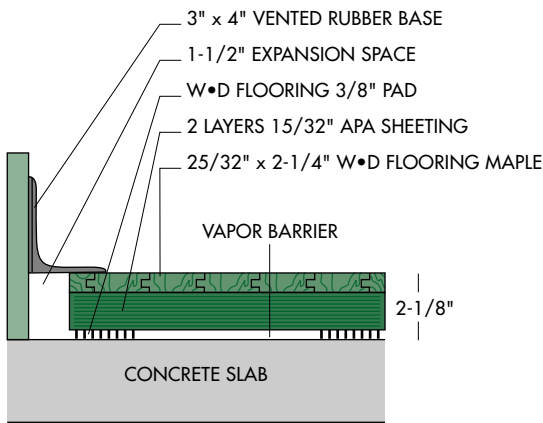
## Base Installation

Install vent cove base to walls with cove base adhesive and/or mechanical attachment. Use pre-molded outside corners and mitered inside corners.

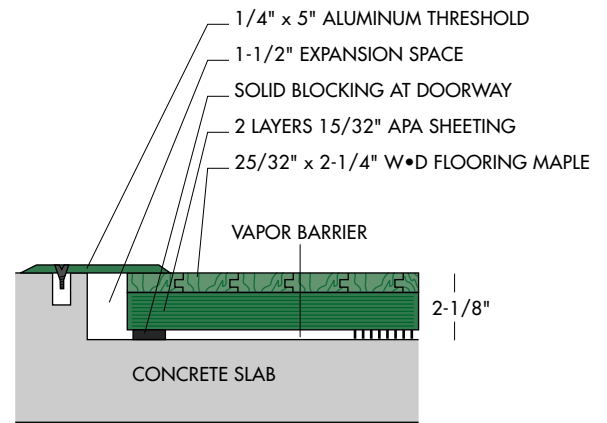
## Documentation

Provide job condition documentation to owner with any warranties.

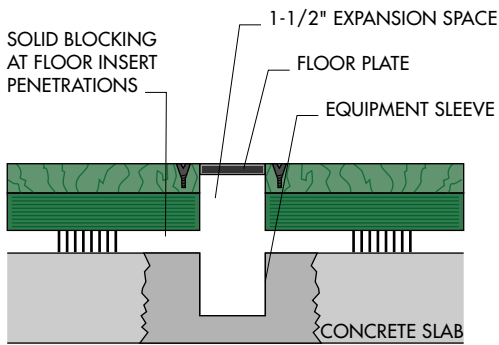
### Wall Base Detail



### Threshold Detail



### Equipment Detail



### Electrical Box Detail

